

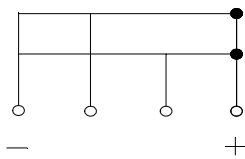
Bridge Rectifiers

Features

- UL recognition, file #E230084
- Glass passivated chip junction
- Ideal for printed circuit boards
- High surge current capability
- Solder dip 275 °C max. 7 s, per JESD 22-B106

Typical Applications

General purpose use in AC/DC bridge full wave rectification for switching power supply, home appliances, office equipment, industrial automation applications.



Mechanical Data

- Package:** KBU
- Molding compound meets UL 94 V-0 flammability rating, RoHS-compliant
- Terminals:** Tin plated leads, solderable per J-STD-002 and JESD22-B102
- Polarity:** As marked on body

Maximum Ratings ($T_a=25$ Unless otherwise specified)

PARAMETER	SYMBOL	UX		KBU801	KBU802	KBU804	KBU806	KBU808	KBU810
Device marking code			KBU8005	KBU801	KBU802	KBU804	KBU806	KBU808	KBU810
Maximum Repetitive Peak Reverse Voltage	VRRM	V	50	100	200	400	600	800	1000
Maximum RMS Voltage	VRMS	V	35	70	140	280	420	560	700
Maximum DC blocking Voltage	VDC	V	50	100	200	400	600	800	1000
Average Rectified Output Current @60Hz sine wave, R-load	With heatsink $T_c=115$	IO	A	8.0					
	Without heatsink $T_a=25$			2.8					
Forward Surge Current (Non-repetitive) @8.3ms, Half-sine wave, 1 cycle, $T_j=25$	IFSM	A				150			
Current Squared Time @1ms t 8.3ms $T_j=25$, Rating of per diode	I^2t	A ² S				93.4			
Mounting torque @Recommend torque 5kg cm	Tor	kg cm				8			
Storage temperature	T_{stg}					-55 ~ +150			
Junction temperature	T_j					-55 ~ +150			



KBU8005 THRU KBU810

Electrical Characteristics $T_a=25$ Unless otherwise specified

PARAMETER	SYMBOL	UNIT	TEST CONDITIONS	KBU8005	KBU801	KBU802	KBU804	KBU806	KBU808	KBU810
Maximum instantaneous forward voltage drop per diode	V_F	V	$I_{FM}=4.0A$				1.0			
Maximum DC reverse current at rated DC blocking voltage per diode	I_R	μA	$T_j=25$				5			
			$T_j=125$				100			
Typical junction capacitance	C_j	pF	Measured at 1MHz and Applied Reverse Voltage of 4.0 V.D.C				40			

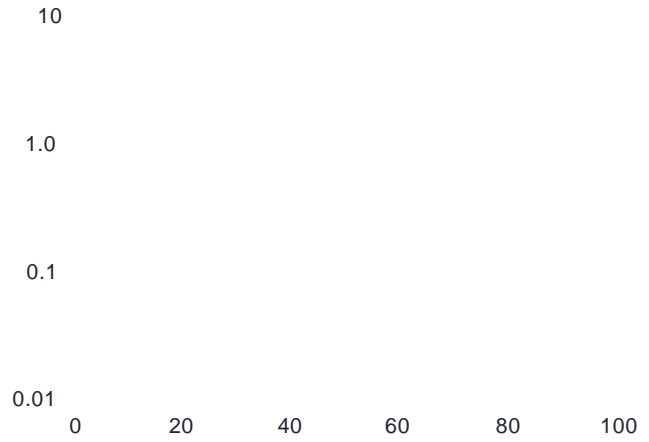
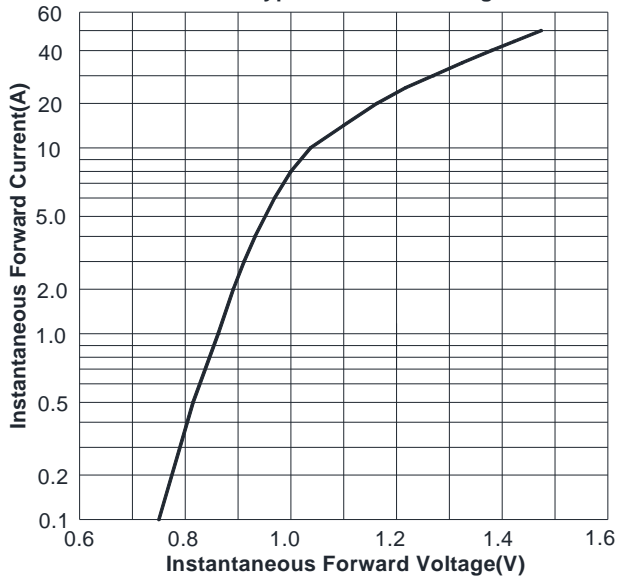
Thermal Characteristics $T_a=25$ Unless otherwise specified

PARAMETER	SYMBOL	UNIT	KBU8005	KBU801	
-----------	--------	------	---------	--------	--

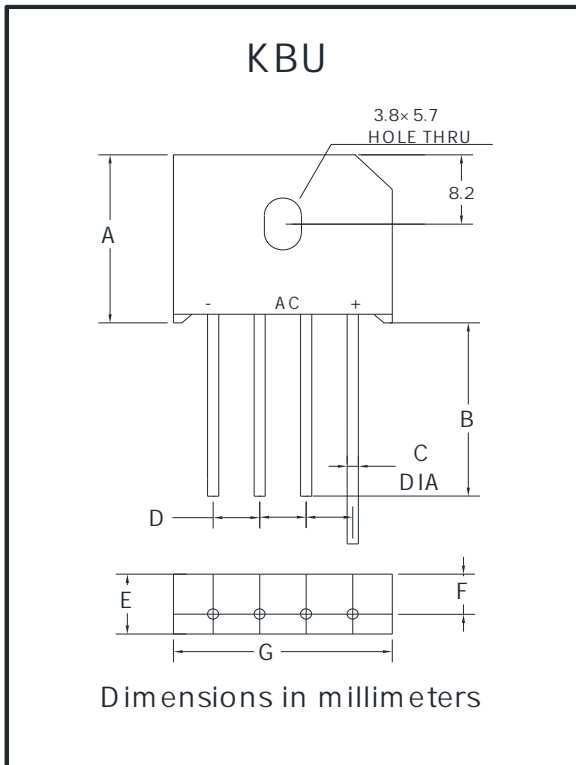


KBU8005 THRU KBU810

FIG3: Typical Forward Voltage



Outline Dimensions



KBU		
Dim	Min	Max
A	18.8	19.8
B	20.0	/
C	1.2	1.3
D	4.6	5.6
E	6.8	7.1
F	4.6	5.0
G	22.7	23.7



Disclaimer

The information presented in this document is for reference only. Yangzhou Yangjie Electronic Technology Co., Ltd. reserves the right to make changes without notice for the specification of the products displayed herein to improve reliability, function or design or otherwise.

The product listed herein is designed to be used with ordinary electronic equipment or devices, and not designed to be used with equipment or devices which require high level of reliability and the malfunction of which would directly endanger human life (such as medical instruments, transportation equipment, aerospace machinery, nuclear-reactor controllers, fuel controllers and other safety devices), Yangjie or anyone on its behalf, assumes no responsibility or liability for any damages resulting from such improper use of sale.

This publication supersedes & replaces all information previously supplied. For additional information, please visit our website [http:// www.21yangjie.com](http://www.21yangjie.com) , or consult your nearest Yangjie's sales office for further assistance.